

On The Disk...

A run-down of what's included on the free disk with this issue

Collated and tested by Mike Orriss

Each month, subscribers to The Delphi Magazine receive a *free* companion disk packed with goodies. This includes the source code and example files for all the articles in the current issue.

But, there's much more too! The headings are the directory names where you will find the files on the floppy disk.

➤ AUTOLED

TAutoLED is a nice little freeware Delphi 2 component that provides MouseEnter and MouseLeave events which enable you to display a LED type button that responds to the mouse position, like "cool buttons". It looks quite effective if you make the button blink while it is the active control.

➤ DIRTREE

The TDirTree component for Delphi 2 can be used to display (and set) drives and/or directories in a treeview style.

➤ DYNARR20

The Dynarray classes from RealSoft provide access to several types of re-sizable arrays. This feature is not a standard part of Object Pascal and simulating a dynamic array can be tedious and cumbersome. The Dynarray classes not only make managing a re-sizable array simple, but add functionality not found in standard arrays, such as sorting, saving to file, inserting and more. In comparison to using a TList, the Dynarray is far superior. Where TLists are restricted to lists of pointers, the Dynarray can be any data type, including records. The Dynarray also keeps all of its data in one contiguous memory block for tightness and security.

➤ SUPREDIT

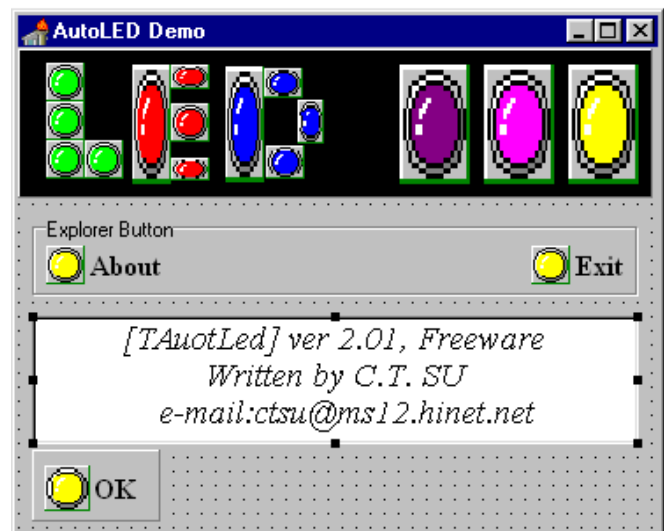
The TSuperEdit component from RealSoft is a new multipurpose masked edit control. It includes special handling for text, real, integer, dollar, percent, date, time, phone and more data types. Numeric values can be right justified, even while editing. ReadOnly or Disabled edits can be made gray. In addition, SuperEdit provides easy access properties to multiple data types.

➤ TABLEMNT

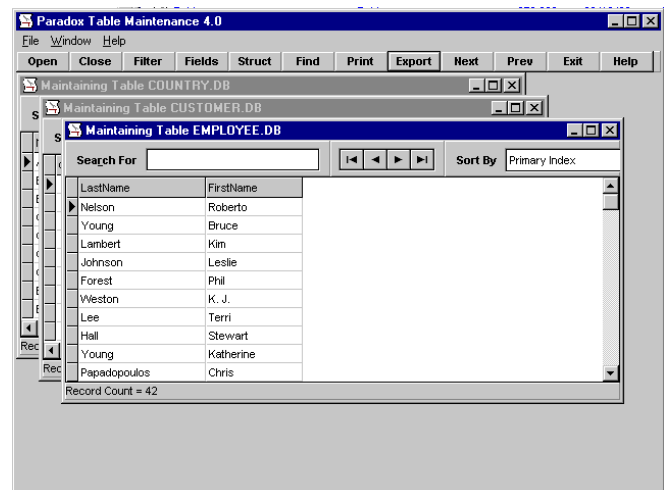
This is a 16-bit application that is very good for quick and dirty maintenance of Paradox and dBase tables. Particularly useful is the ability to select fields and then export them to CSV files.

➤ TREX

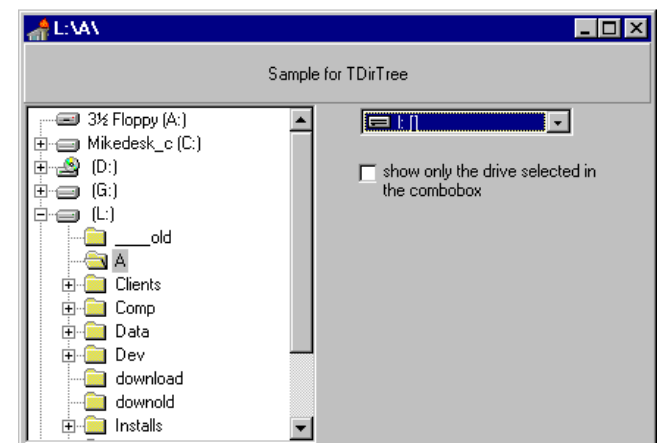
Trex is a Delphi 3 package, the first expert from Mike Scott and John Howe that will form part of their new Merlin Delphi Wizard collection.



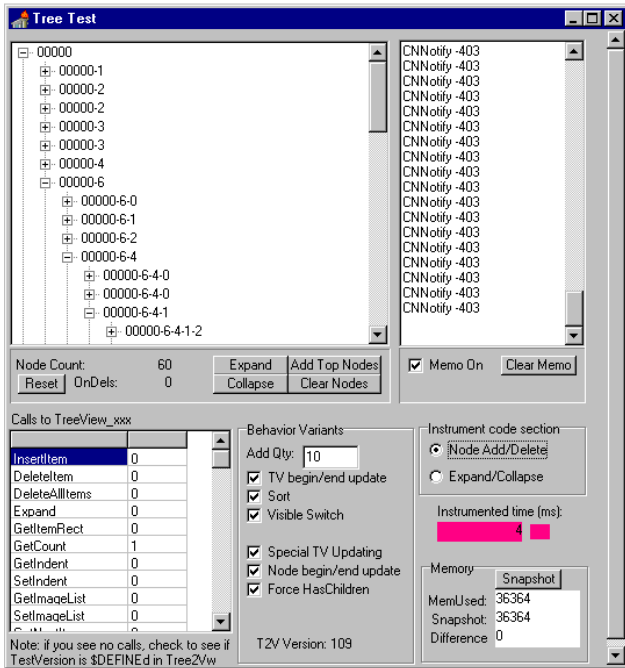
➤ TAutoLED will brighten up those grey days...



➤ TableMnt will keep your tables in order



➤ TDirTree displays and sets drives and directories



➤ **T2V111**

This is the TreeView Exploration Kit for Delphi 2. The TTree2View component has numerous speed fixes and there's a demo program (see above) so you can see how fast it goes. Plus there's an interface unit that intercepts all calls to the Win95 control itself, so that the calls can be counted.

➤ **XPIE**

TxPie provides a three dimensional pie to display simple charts. It looks like the one you already use to check

free and used drive space in Windows 95/ NT 4.0. You can click on each pie, assign each pie a different height, add a tooltip for each segment or move the segment out. You can define each item of the pie with a bespoke property editor. See the screenshot on the cover.

➤ **XPROCS**

This is a free function library (with source) that can be used with Delphi 1.0 and Delphi 2.0. It contains over 150 functions in the areas of string, date/time, file, system, registry, bits, integer, and floating point.

➤ **INTERNET**

Listing of Delphi-related World Wide Web and ftp sites.

➤ **USERGPS**

List and contact information for Delphi User Groups (email us with details of *your* group for the next list).

Important Note!

Always, but ***always*** make a backup copy of your Delphi 1 or 2 component library file *before* you take the plunge and install *any* new component into Delphi! Sometimes component installation can trash your component library and you will then be left with an inoperative Delphi will have to re-add *all* your extra components.

Send In Your Code...

If you have some carefully crafted routines, why not send them in for evaluation by mail or (zipped up) by CompuServe email to our Disk Editor, Mike Orriss, on 100570,121. We do consider *all* submissions for use on future disks.